

Company Profile

Since its establishment, SonoScape has been committed to providing high quality medical equipment for the healthcare sector. SonoScape specializes in the development and production of diagnostic ultrasound solutions. By introducing advanced imaging techniques, SonoScape has improved diagnostic accuracy and therefore enabled better health outcomes. Since 2002, SonoScape has reached and benefited millions of people. With the world in mind, SonoScape will continue providing more effective and accessible healthcare solutions, through persistent innovation and passion for life.

Quote from the Analyst of

"The Frost & Sullivan Award for Growth Leadership is presented to the company that has demonstrated excellence in capturing the highest annual compound growth rate for the last 3 years...The sales of ultrasound devices contribute an overwhelming proportion of total revenue, helping the company strengthen its leading position to outperform the competitors in the marketplace. With increasing penetration of mid-to high-end ultrasound devices, SonoScape is expected to see significant growth potential in the future..."

Company Milestone

- 2002: Company Founded in Shenzhen, China
- 2003: Released SSI-1000: the 1st 15" Portable Color Doppler system in China
- 2004: Released SSI-2000: the 1st PC platform Color Doppler system in China
- 2005: Received the "High Technology Company" award from the PRC government
- 2007: Received "CHINA TOP BRAND" award in the Medical Equipment Industry
- 2007: Released the 1st Real time 4D ultrasound system in China
- 2008: Received "European Entrepreneurial Company 2008" award from FROST & SULLIVAN
- 2008: Received "Flagship Company" award in the Medical Equipment Industry in China
- 2009: Received "Product Quality Leadership Award 2009" from FROST & SULLIVAN
- 2011: Received the Reddot 2011 Product Design Award for S20 in Essen, Germany
- 2013: Received "Ultrasound Market Growth Leadership Award, 2013" from FROST & SULLIVAN
- 2014: Received the iF Product Design Award 2014 for S9 in Munich, Germany
- 2014: Received "Company of the Year in Ultrasound Market, 2014" from FROST & SULLIVAN



ISO 13485

CE 0197

SonoScape

Yizhe Building, Yuquan Road, Shenzhen, 518051, China

Tel: 86-755-26722890 Fax: 86-755-26722850

E-mail:sonoscape@sonoscape.net www.sonoscape.com

S11V

Fully-integrated Solutions for
Veterinary Imaging



U-S11V20150316

SonoScape

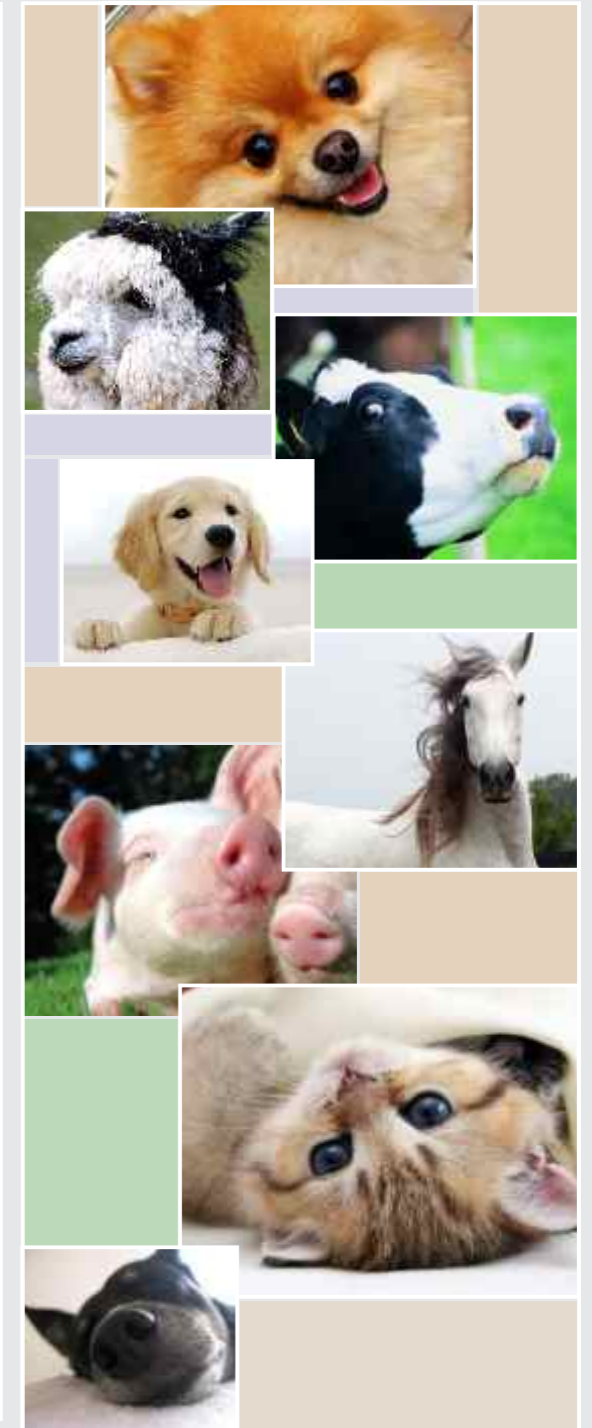
Caring for Life through Innovation



S11V Compact Console Ultrasound System

S11V is a high performance veterinary ultrasound cart based system delivering breakthrough technologies and providing outstanding versatility and performance for the modern small or mixed animal veterinary clinics or research laboratories. Developed on the new SonoScape software platform and sophisticated ergonomic design, the S11V is specially optimized for smooth workflow and convenient operation.

Major features such as specialized veterinary patient information input interface, dedicated structure of veterinary applications and presets, veterinary application icons and body marks, reproductive gestational age and obstetric calculation package make this system a truly unique dedicated veterinary ultrasound system.

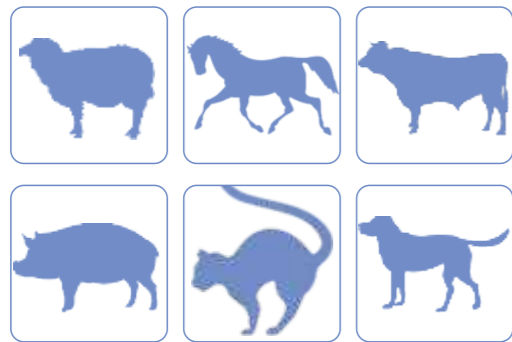


S11V

Fully-integrated Solutions for
Veterinary Imaging

Satisfactory Solution

Compact in size while full in functionality and feature, the S11V is specially engineered for all aspects of veterinary ultrasound imaging with multiple standards and optional imaging technologies at a very affordable price.



Broad Range of Applications

Optimized for a board range of animal clinical applications: abdominal, reproductive, cardiac, tendinous, thoracic, small parts exams for large or small animals, including feline, canine, equine, bovine, ovine and suidae.

Complete Working Modes

- B Mode, Dual B, Quad B
- M mode, Anatomic M
- Color Mode, DPI Mode
- PW Mode, CW Mode

Proven Technologies

- Tissue Harmonic Imaging
- Trapezoidal Imaging
- Spatial Compound Imaging
- Panoramic Imaging
- Micro-scan Speckle Reduction



Specialized Application

The S11V is fully configured with a dedicated veterinary software package so as to satisfy the increasing clinical requirements for reliable veterinary diagnosis.

- User-definable graphic exam modes applicable for small and large animals.
- More than 50 kinds specialized veterinary body marks and annotations
- Abundant veterinary measurement and calculation software package, especially in animal prenatal diagnosis
- Professional veterinary high density linear array for endocavity reproductive and superficial application
- Reliable veterinary design such as anti-dust and anti-splash control panel



Simplified Workflow

Designed on the powerful new platform which provides versatile solutions for smooth workflow and convenient operation, the S11V will speed up the veterinarians' exam process and significantly improve their ultrasound scanning experience. The smart workflow will help them work smart.

- Fully customized working setting
- Multiple predefined and user configurable presets, function keys, formulas, measurements, report layout for each clinical specialties for simple operation
- M-tuning function
- Make it easy to achieve the optimized 2D and Doppler image with minimal keystrokes
- Clip-board function
- Convenient image review during scanning

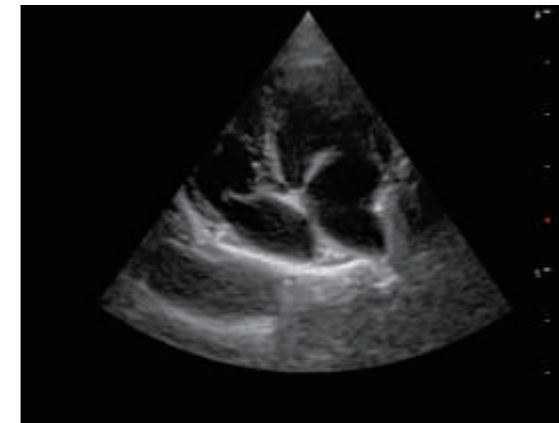
- Smart patient file management
- Easy access to patient image and data storage, retrieve, review and report
- Various data solutions
- 320G Hard drive, Dual USB port, VGA, S-Video, LAN port, video printer, USB laser/jet printer.....
- Value-added DICOM functions
- Save, Storage Commitment, MPPS, Print, Wroklis; providing more advanced file management solutions

Streamlined Design

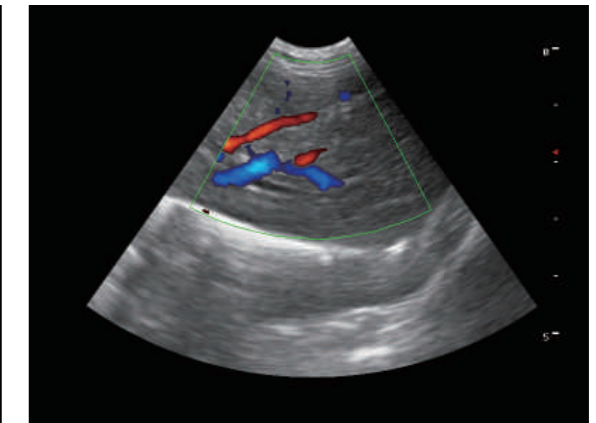
The ergonomics of the S11V ensures the convenience of daily operation and reduces repetitive stress injuries due to daily activities. This streamlined console with space for peripherals such as video printers is easy to move from room to room, and the system's operation panel has been designed to be both user-intuitive and ergonomic...All these factors contribute to better workflow and high efficiency.



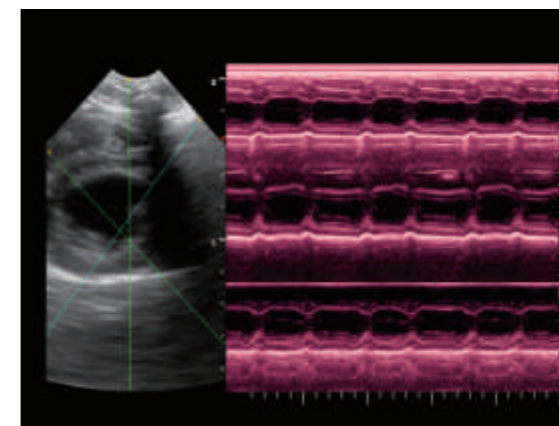
Superior Imaging Quality



Canine Four Chamber



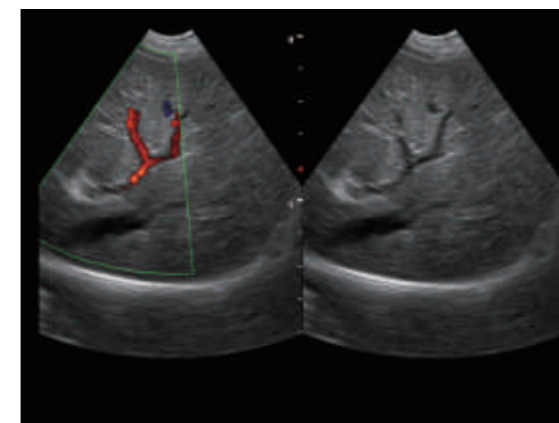
Feline Liver



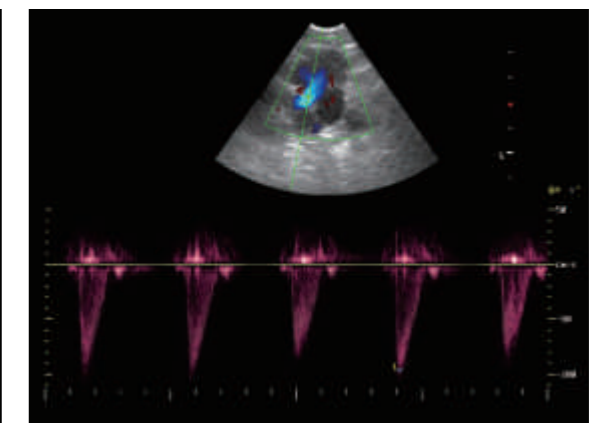
Papillary M Mode



Urinary Bladder



Canine Liver



Feline AO